



HARD METAL BLADES

SAVE COSTS
WITH HARD
METAL
BLADES



Arctic Machine's hard metal blades are used on various kinds of road maintenance machinery and equipment – wherever the blades must withstand severely chafing wear. On unfrozen roads, hard metal blades are pretty much the only option if you want to save road maintenance costs.

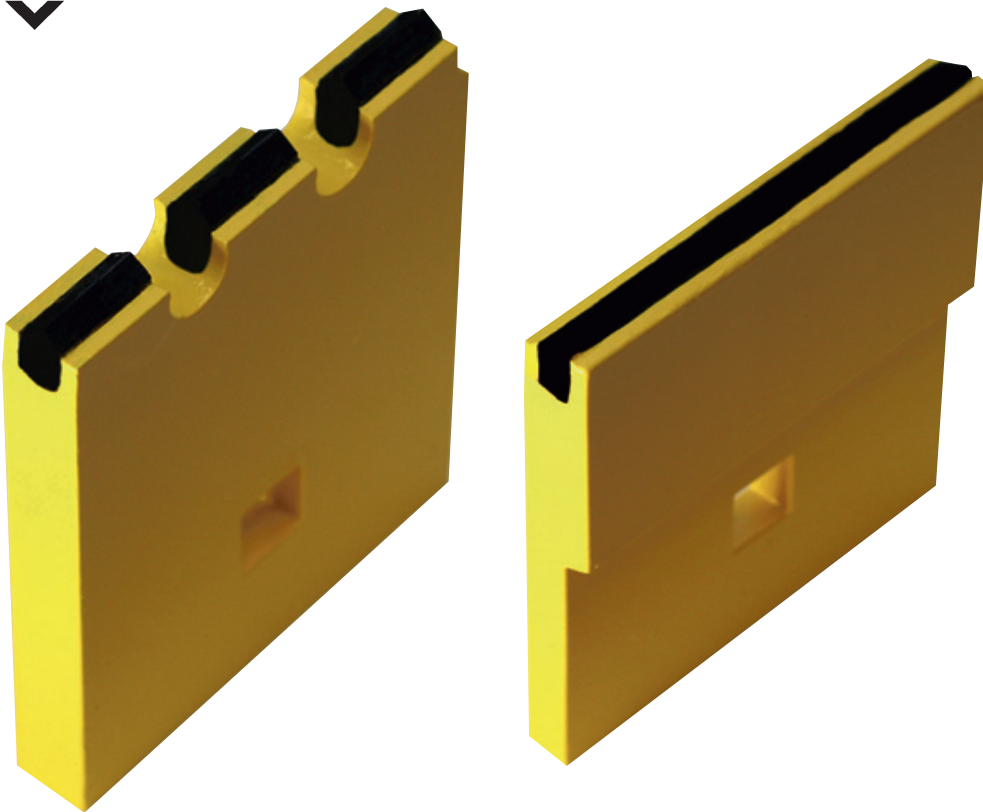


ROAD INTELLIGENCE

Improve your profitability with new blades

With hard metal blades, you can free resources for other work. Furthermore, you don't need to replace them that often, which also saves a lot of money. Flat hard metal blades are ideal for snow ploughing and for work that rapidly wears down the blades. Serrated hard metal blades are perfect for snow ploughing and snow bank levelling, when the surface needs roughening. Serrated blades provide a clean and coarse outcome, which significantly improves the safety on roads designed for pedestrians and bicycles. With our wide selection of durable hard metal blades, you can easily replace all the traditional flat, serrated, and perforated road maintenance blades.

Hard metal has a significantly longer lifespan in comparison to steel. It is a composite material that contains wear-resistant wolfram and cobalt as a binding agent.



Technical information	Serrated hard metal blades	Flat hard metal blades
Hole spacing	305 mm	305 mm
Length	912,1217 mm	610, 792, 912, 1217 mm
Tooth spacing	16 mm	-
Tooth height	14 mm	-

Head Office:

Arctic Machine Oy, Karsikonmäentie 1, FI-77800 Iisvesi, Finland
 Tel. +358 (0)20 7791 500, fax +358 (0)20 7791 501
 am@arcticmachine.com, www.arcticmachine.com

Copyright © Arctic Machine Oy. All rights reserved.



ROAD INTELLIGENCE