



SWIDELLING PLOUGH AM 4000 FMC

Clean and
environmen-
tally friendly
outcome



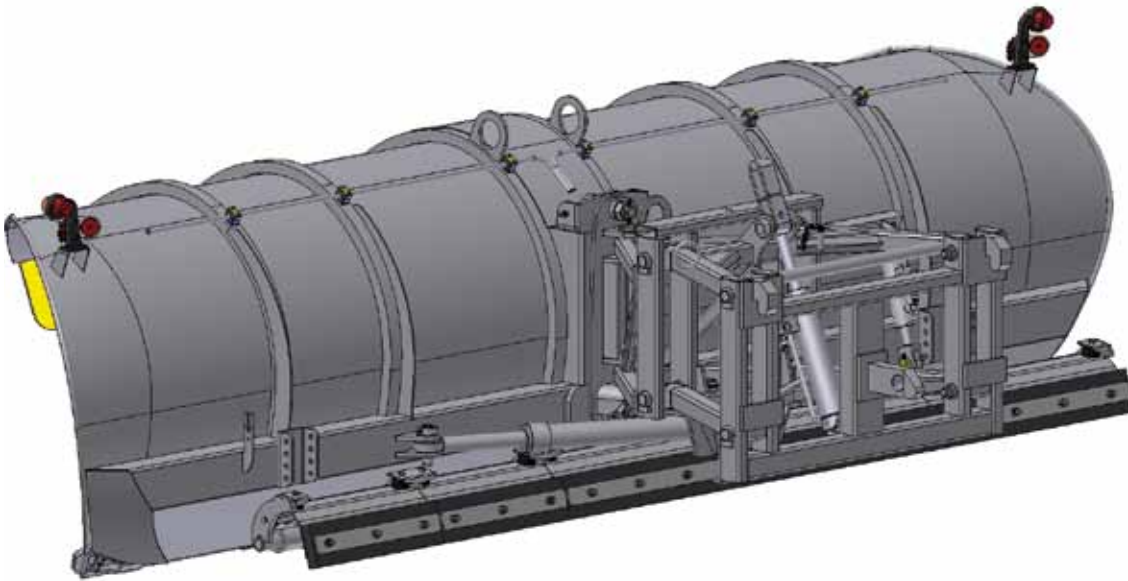
The AM 4000 FMC snow plough's optimally designed wing moves snow lightly and accurately to the right or left. Thus ploughing consumes less energy, which decreases ploughing costs. The wing supported with box-type structures and the extremely sturdy pushing frame can withstand harsh operating conditions without fatigue failure. The plough is suitable for harsh, variable weather conditions and can be used with trucks, tractors, and road machinery.



ROAD INTELLIGENCE

Cost-efficient choice for demanding ploughing

The two swivelling cylinders propped up on the box of the wing are located in the best possible spot, in the supporting structure underneath the pushing frame. These cylinders are protected from impacts by pressure relief valves. The lifting cylinder is protected by a pressure limiter. The lubricatable and exchangeable bushings of the pushing frame joints minimize maintenance costs. The exchangeable wearing parts of the wing protect the main blade of the plough from sideways wear. A five-part double blade (accessory) ensures an extremely clean outcome in demanding weather conditions.



Some of the pictures are shown with accessories.

Technical information	AM 4000 FMC
Ploughing width	2,950 - 3,965 mm
Maximum wing height	1,100 mm
Blade angle	40°
Ploughing angle (swivelling)	42° - 0 - 42°
Wing plate thickness	3 mm
Weight	1,040 kg
Double acting swivelling cylinder	2 pcs
Double acting lifting/lowering cylinder	1 pcs
Double acting lifting/lowering cylinder (double blade)*	1 pcs
Five-part double blade*	160 kg
Electric distributing valve for double blade*	1 pcs
Wear disk RH + LH (not with T2)*	60 kg

*) Accessory

Different kinds of wear blades and lights also available as accessories.

Head Office:

Arctic Machine Oy, Karsikonmäentie 1, FI-77800 Iisvesi, Finland
 Tel. +358 (0)20 7791 500, fax +358 (0)20 7791 501
 am@arcticmachine.com, www.arcticmachine.com

Copyright © Arctic Machine Oy. All rights reserved.



ROAD INTELLIGENCE